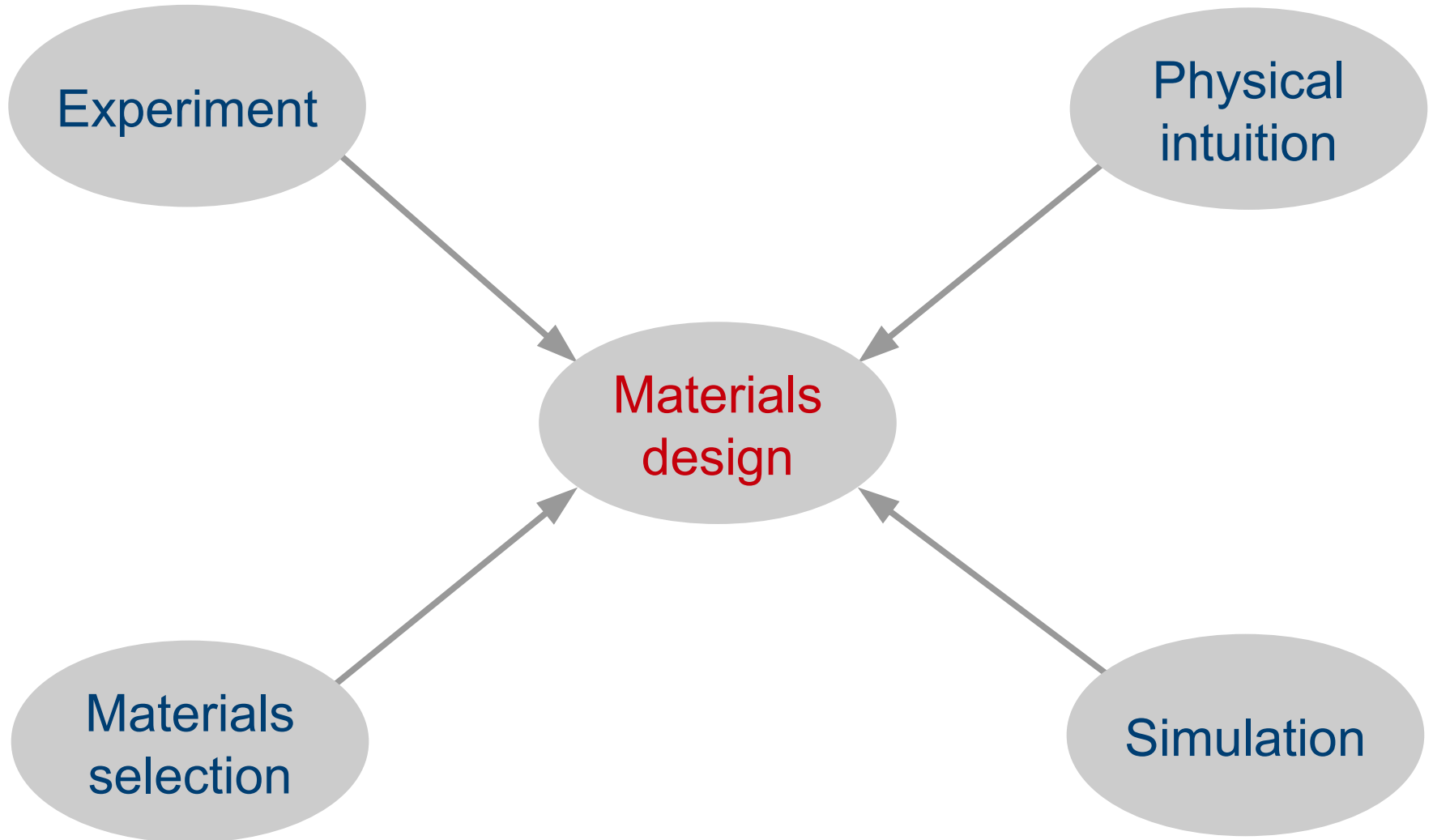


# Materials discovery with artificial intelligence

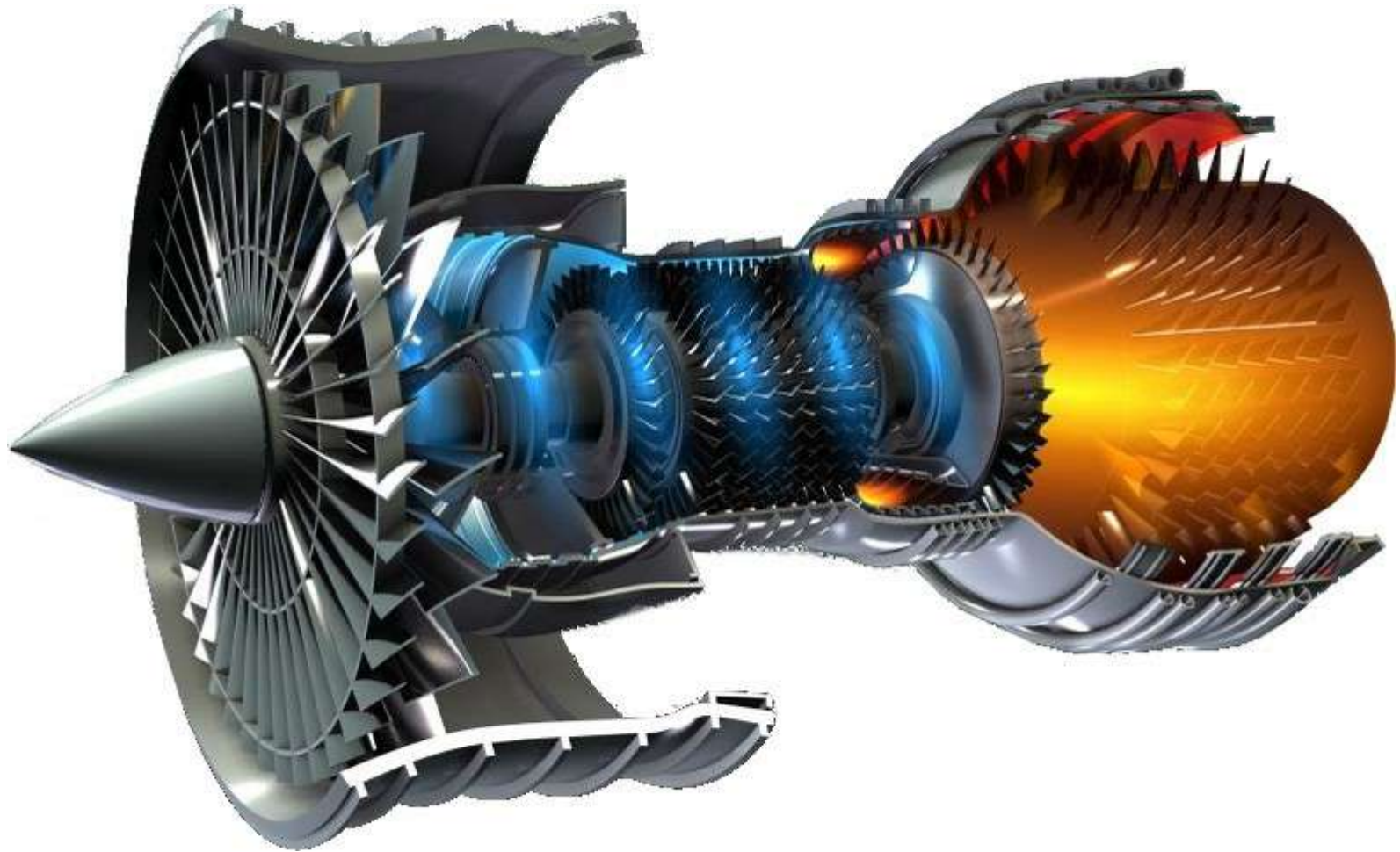
Gareth Conduit

TCM Group, Department of Physics

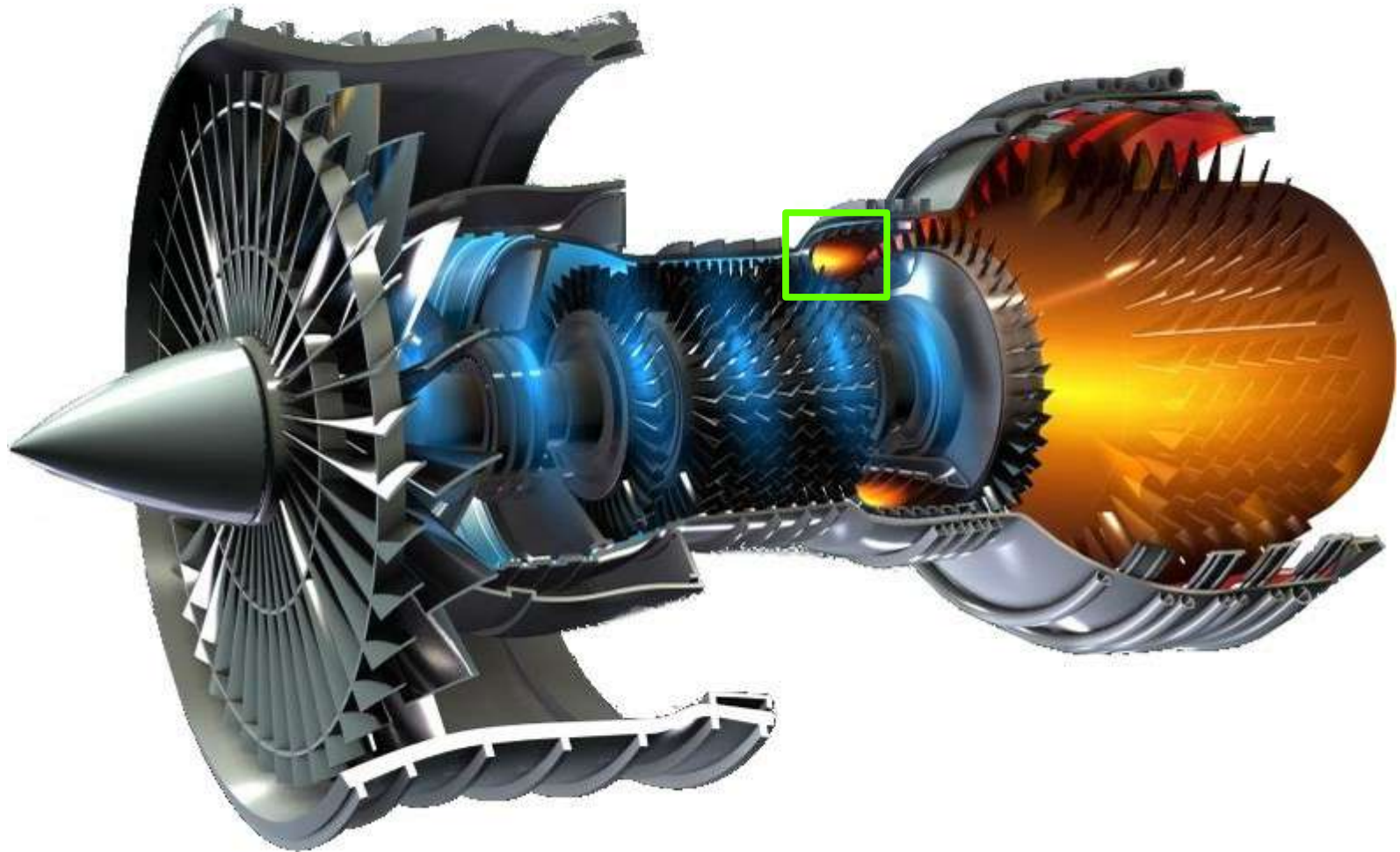
# Approaches to materials design



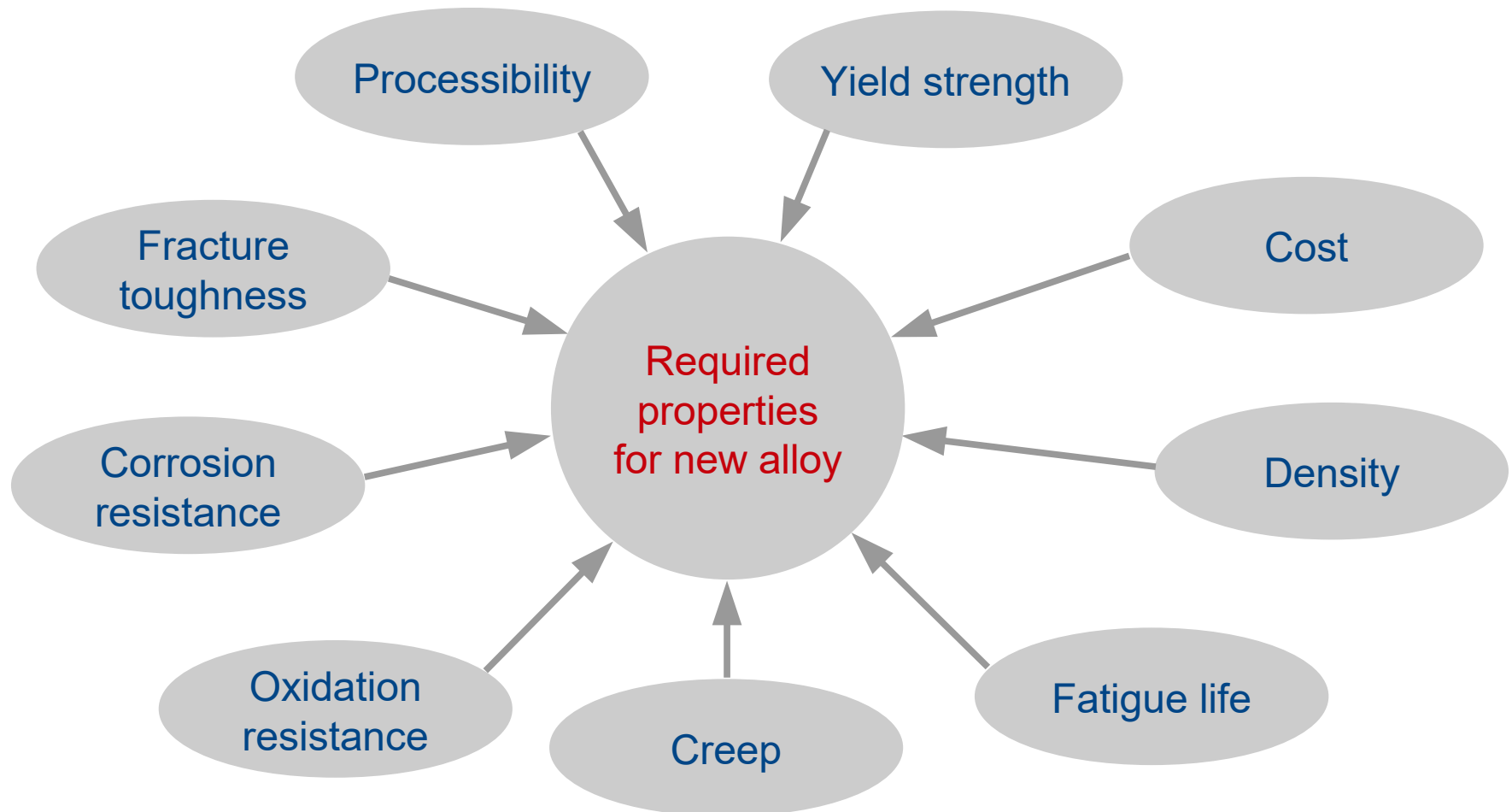
# Schematic of a jet engine



# Combustor liner



# Designing a new alloy: what is required?

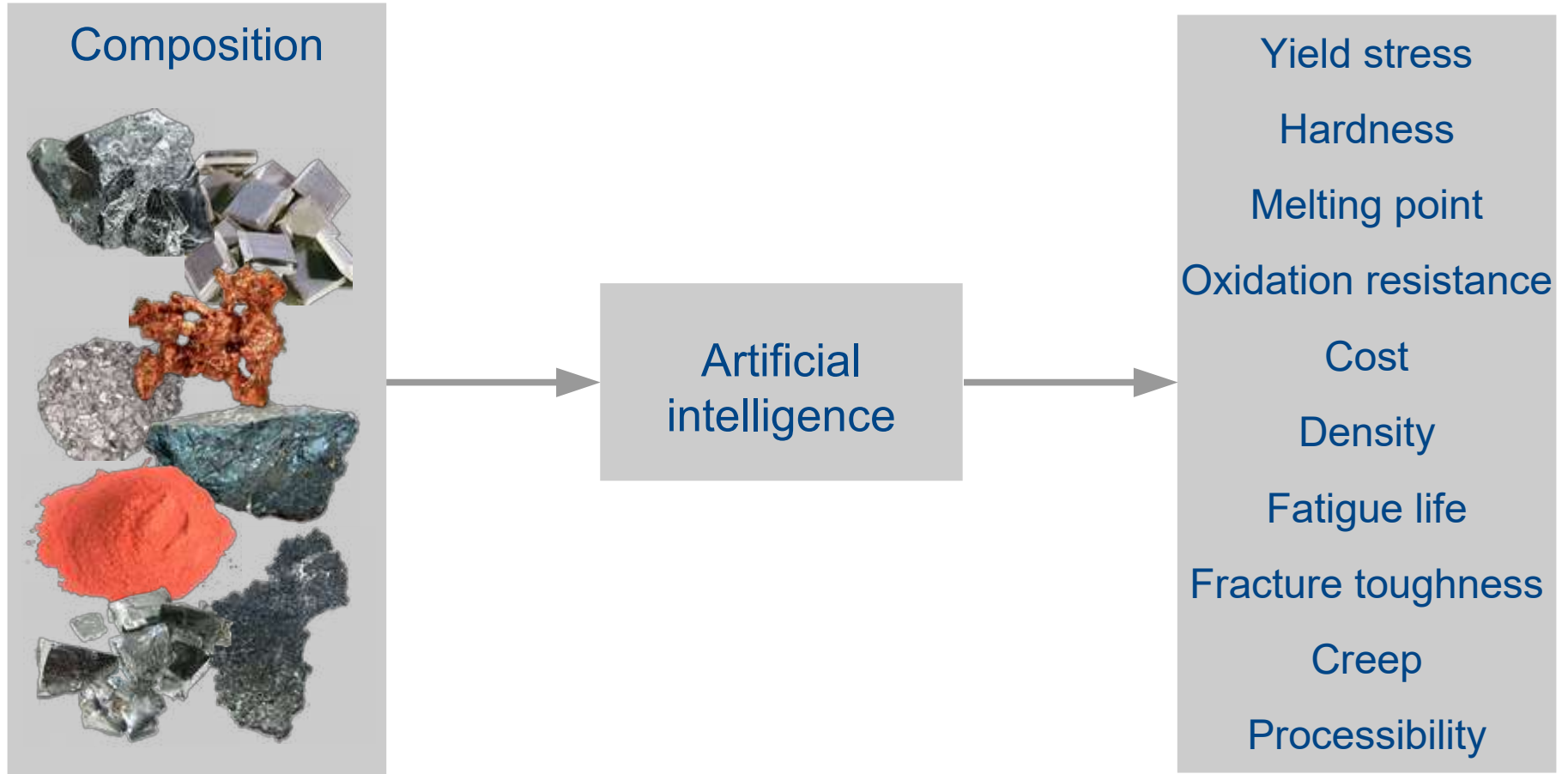


# Multidimensional design space

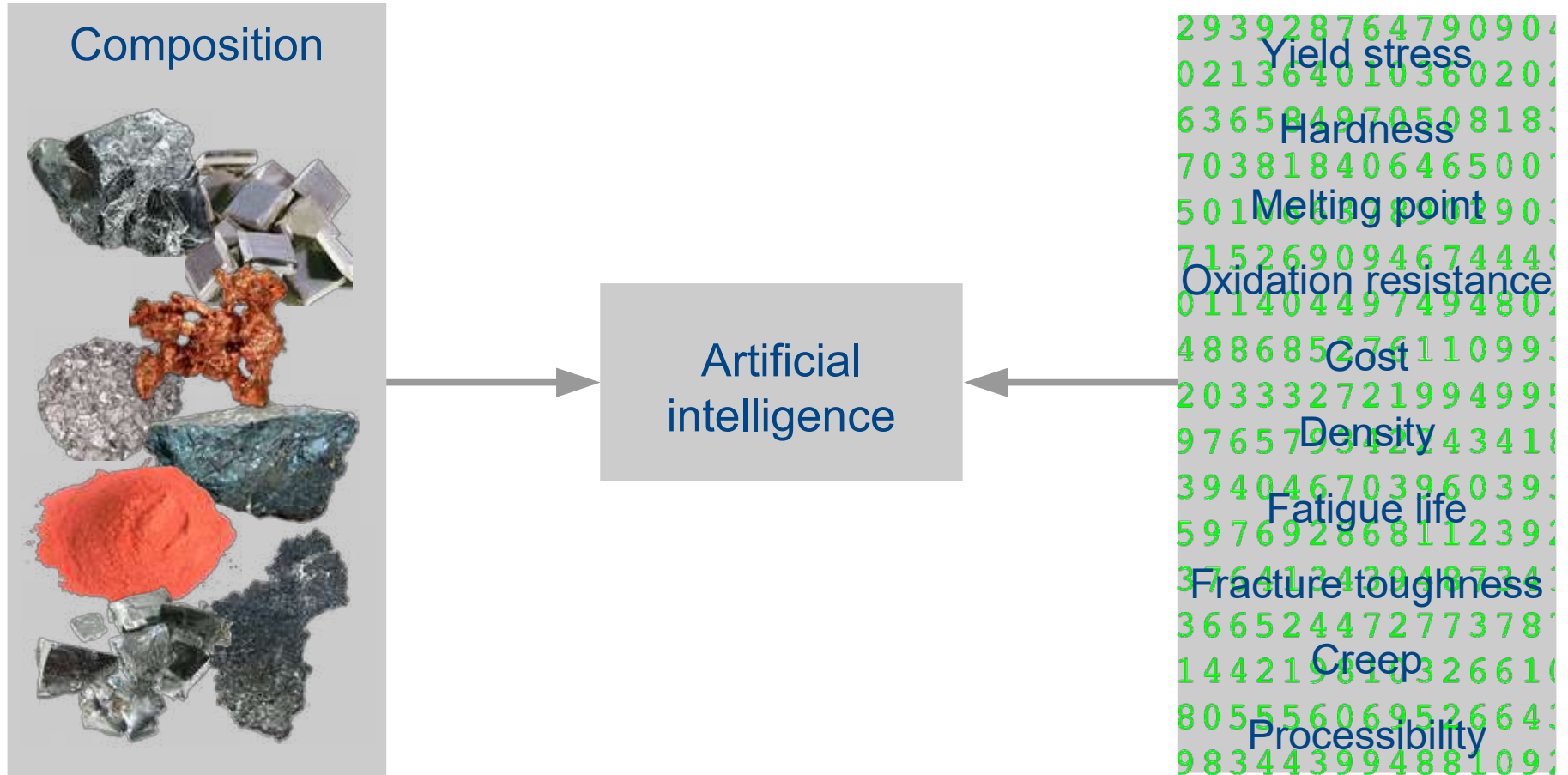


and 4 different manufacturing processes

# Artificial intelligence

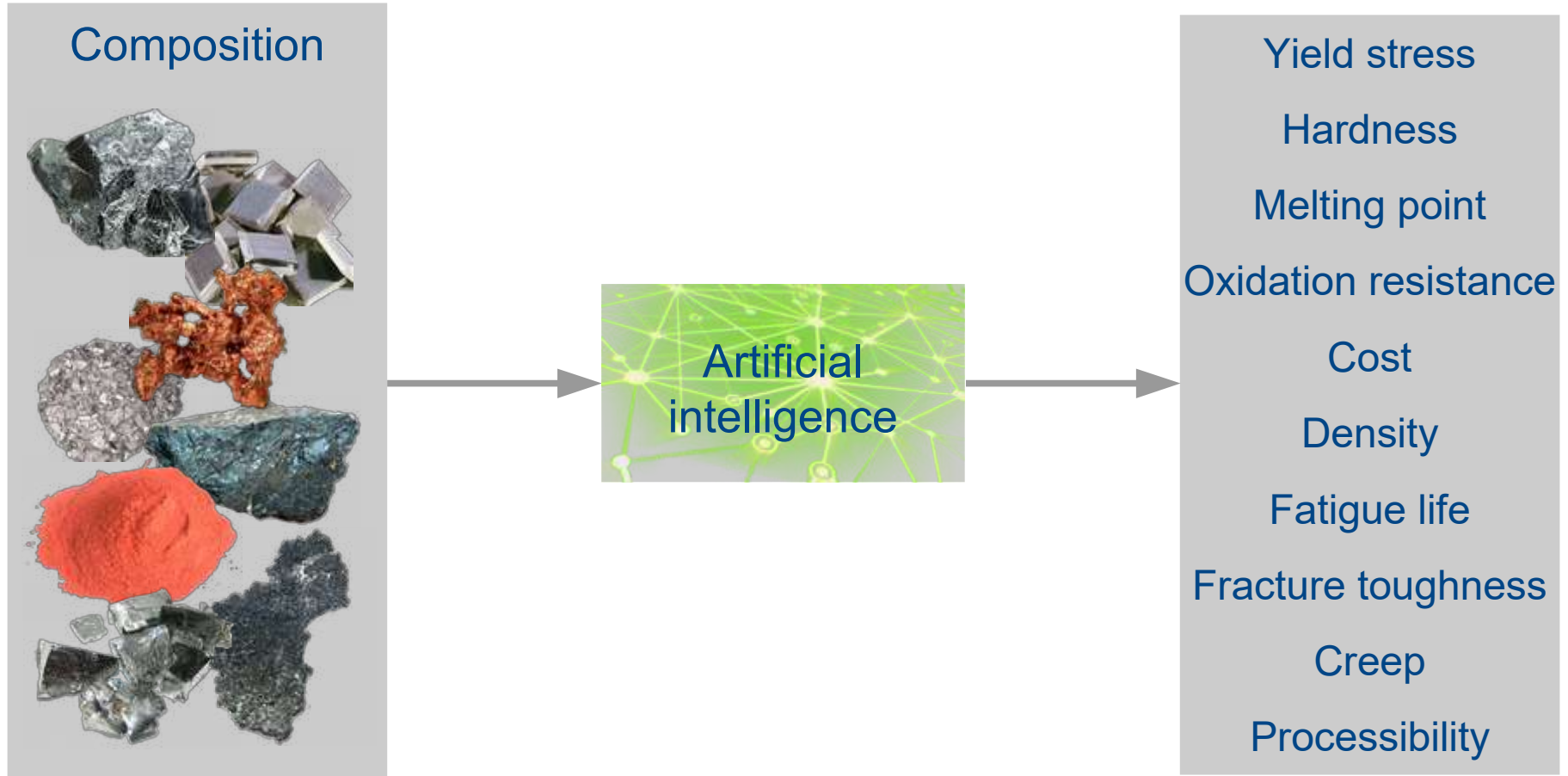


# Artificial intelligence





# Artificial intelligence



# Proposed composition (wt. %)

	Mn	0.2
	Co	20.0
	Mo	0.5
	W	0.5
	Ta	4.9
	Nb	1.1
	Al	2.4
	Ni	Balance



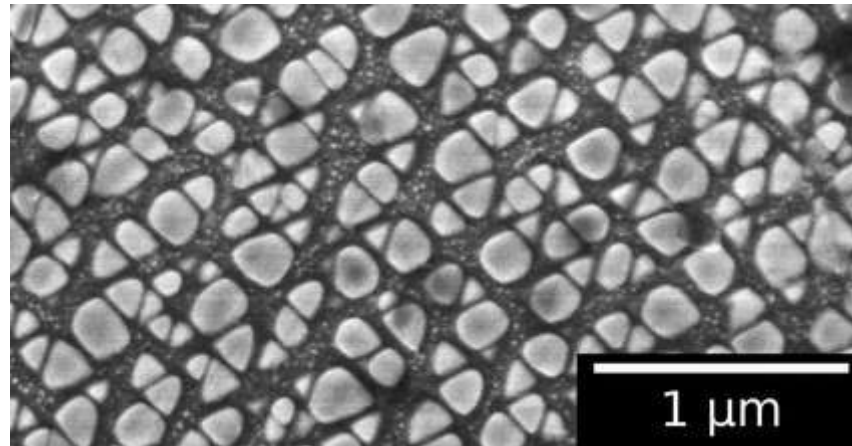
$T$  900°C

	Cr	15.8
	Ti	3.0
	Fe	3.9
	Si	0.2
	Zr	0.18
	B	0.06
	C	0.02

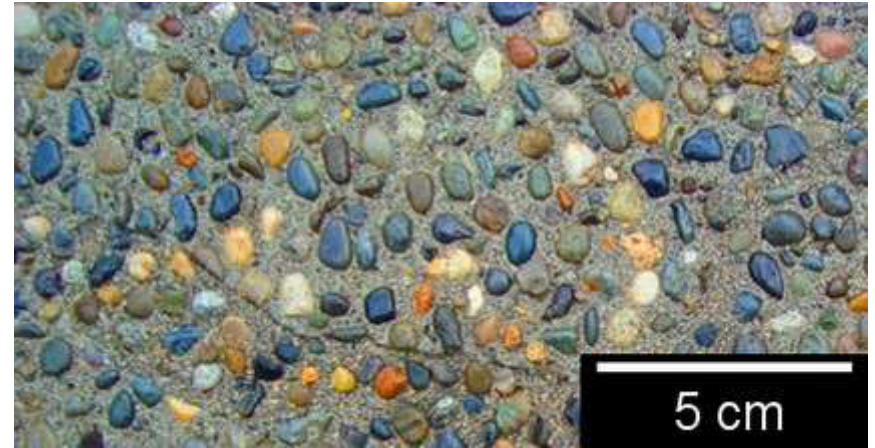
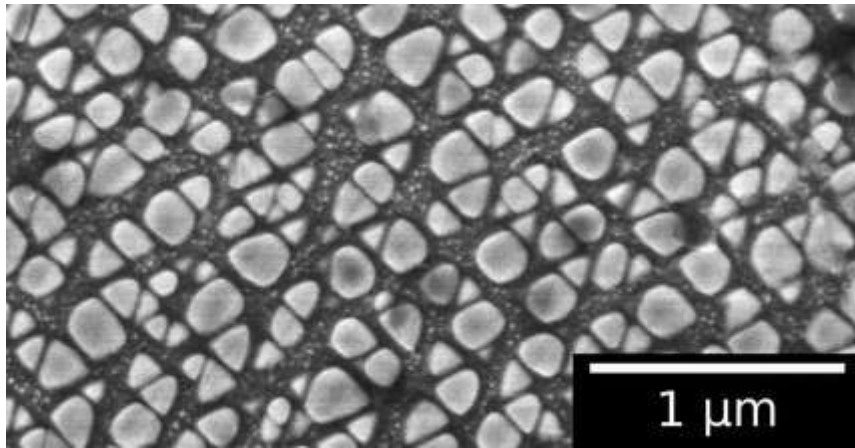


$t$  30 hr

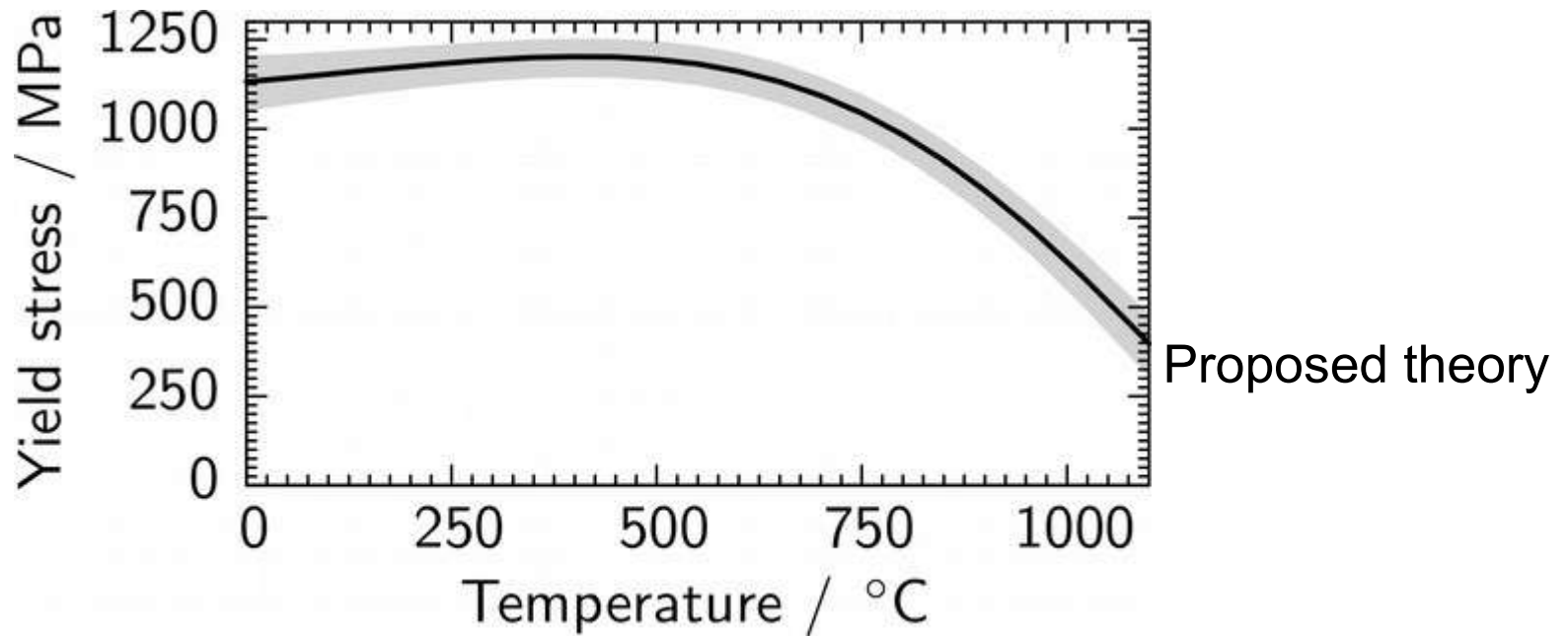
# Microstructure



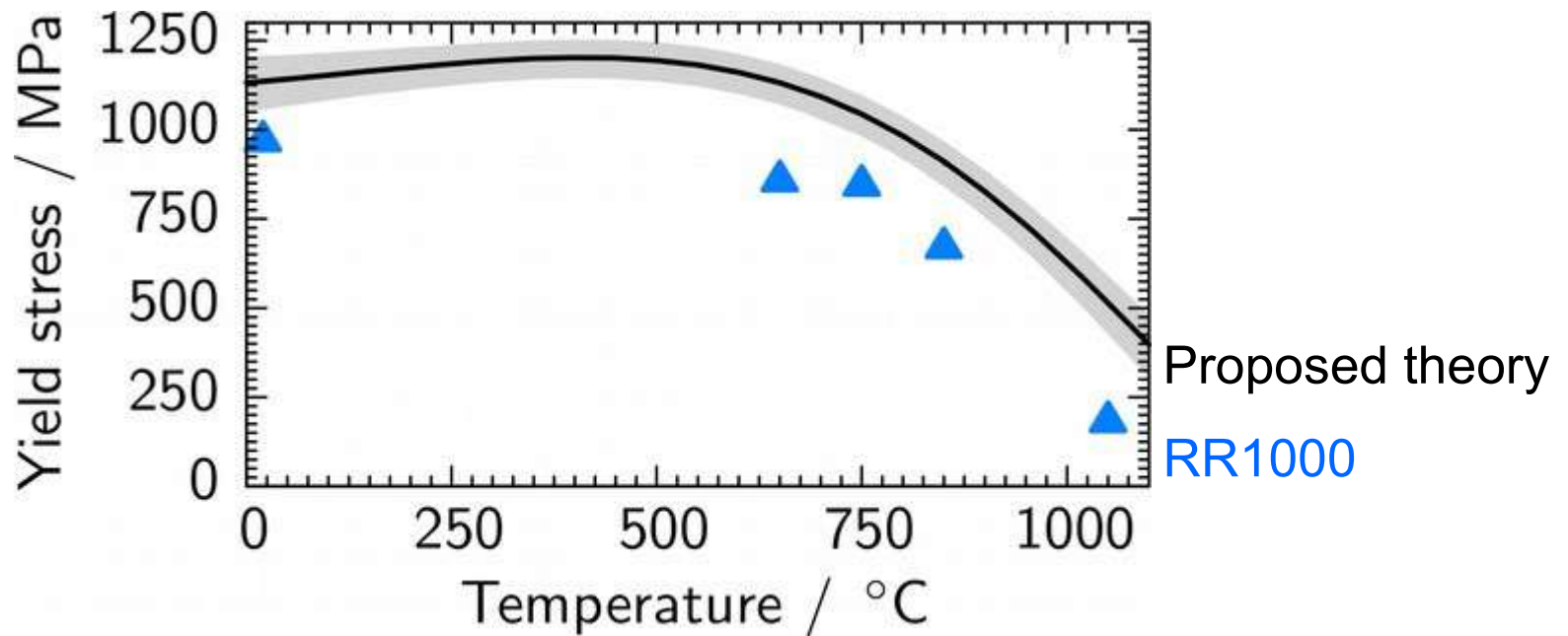
# Microstructure



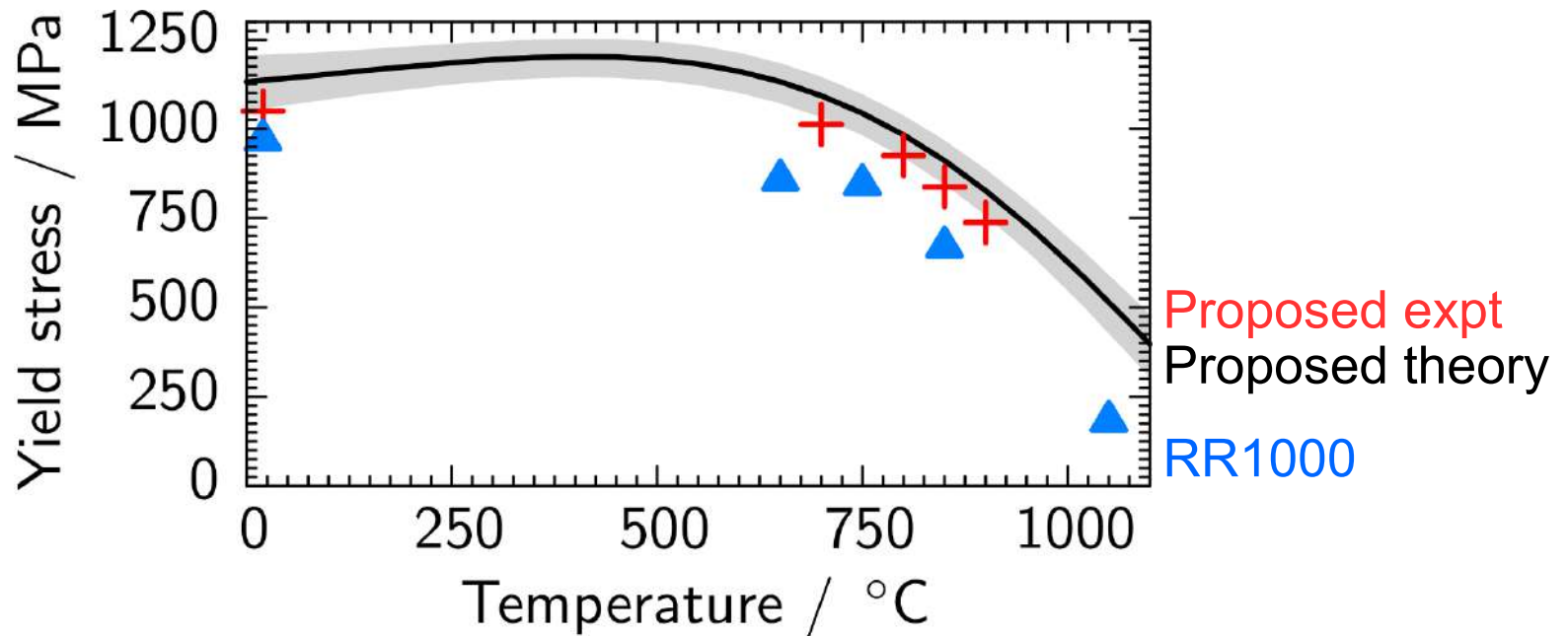
# Testing the yield stress



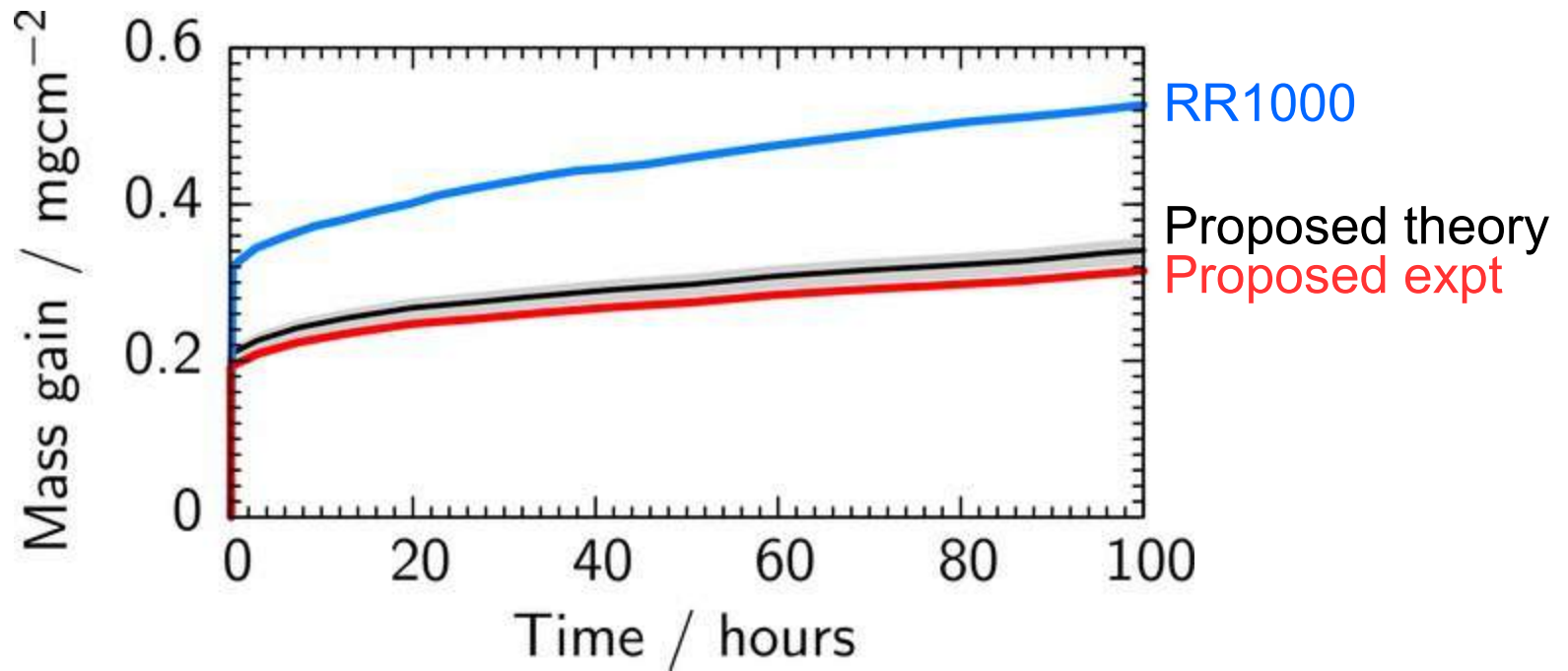
# Testing the yield stress



# Testing the yield stress



# Testing the oxidation resistance

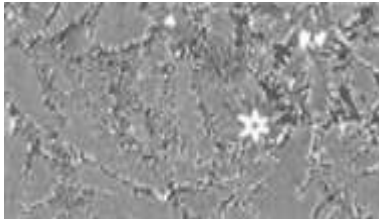




# Alloys discovered

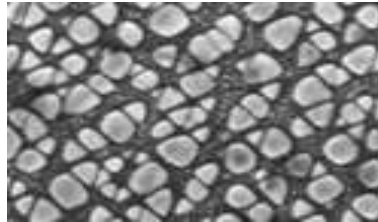
## Cr-Cr<sub>2</sub>Ta alloys

Intermetallics, 48, 62



## Combustor alloy

GB1408536



## RR1000 grain growth

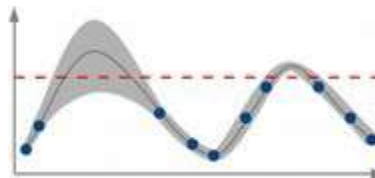
Acta Materialia, 61, 3378



## Discovery algorithm

EP14153898

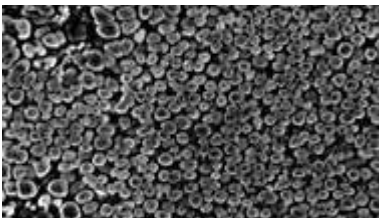
US 2014/177578



## Ni disc alloy

EP14157622

US 2013/0052077 A2



## Mo-Hf forging alloy

EP14161255

US 2014/223465



## Mo-Nb forging alloy

EP14161529

US 2014/224885





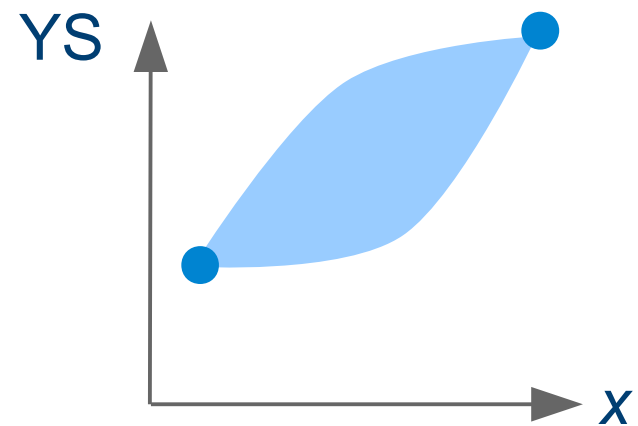
# Fragmented databases

Composition	UTS	Hardness	Yield stress
✓	✓	✓	✓
✓	✓	✗	✓
✓	✓	✗	✗
✓	✗	✓	✓
✓	✓	✗	✗
✓	✗	✗	✗
✓	✓	✓	✗
✓	✗	✗	✓

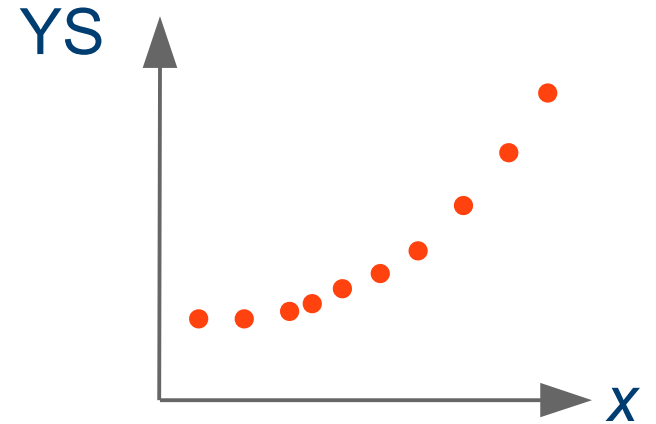
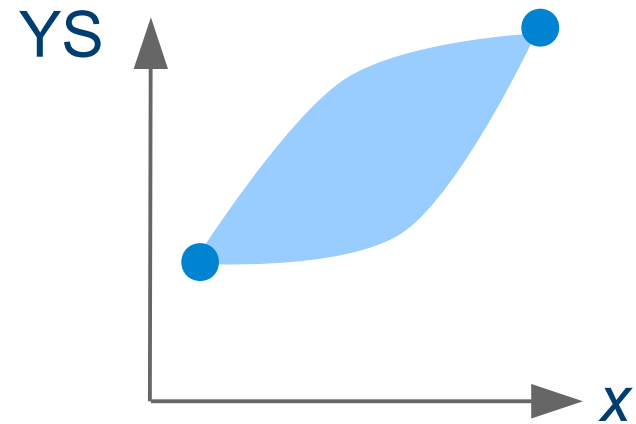
# Fragmented databases

Composition	UTS	Hardness	Yield stress	Comp. YS
✓	✓	✓	✓	✓
✓	✓	✗	✓	✓
✓	✓	✗	✗	✓
✓	✗	✓	✓	✓
✓	✓	✗	✗	✓
✓	✗	✗	✗	✓
✓	✓	✓	✗	✓
✓	✗	✗	✓	✓

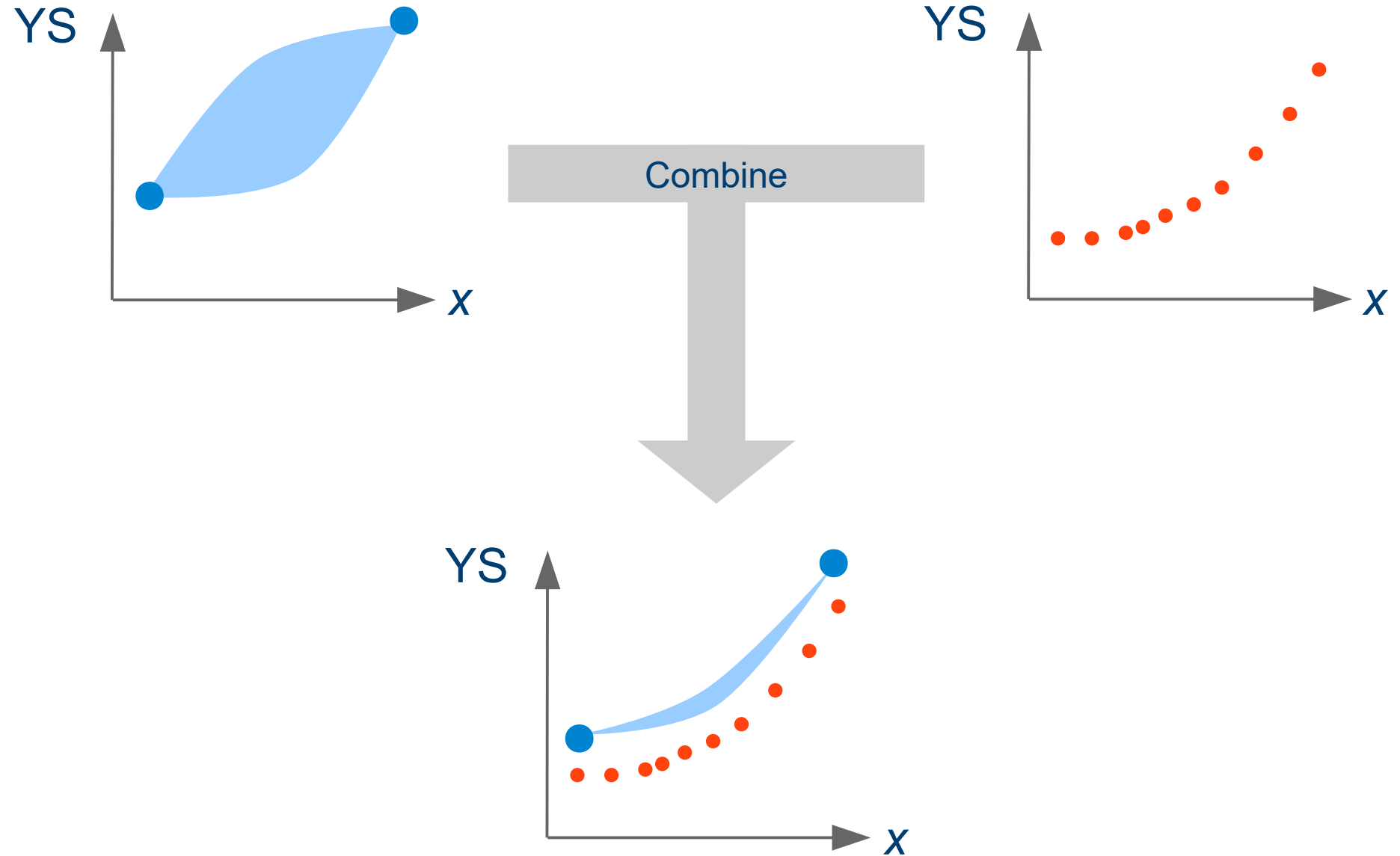
# Merging simulation and experiment



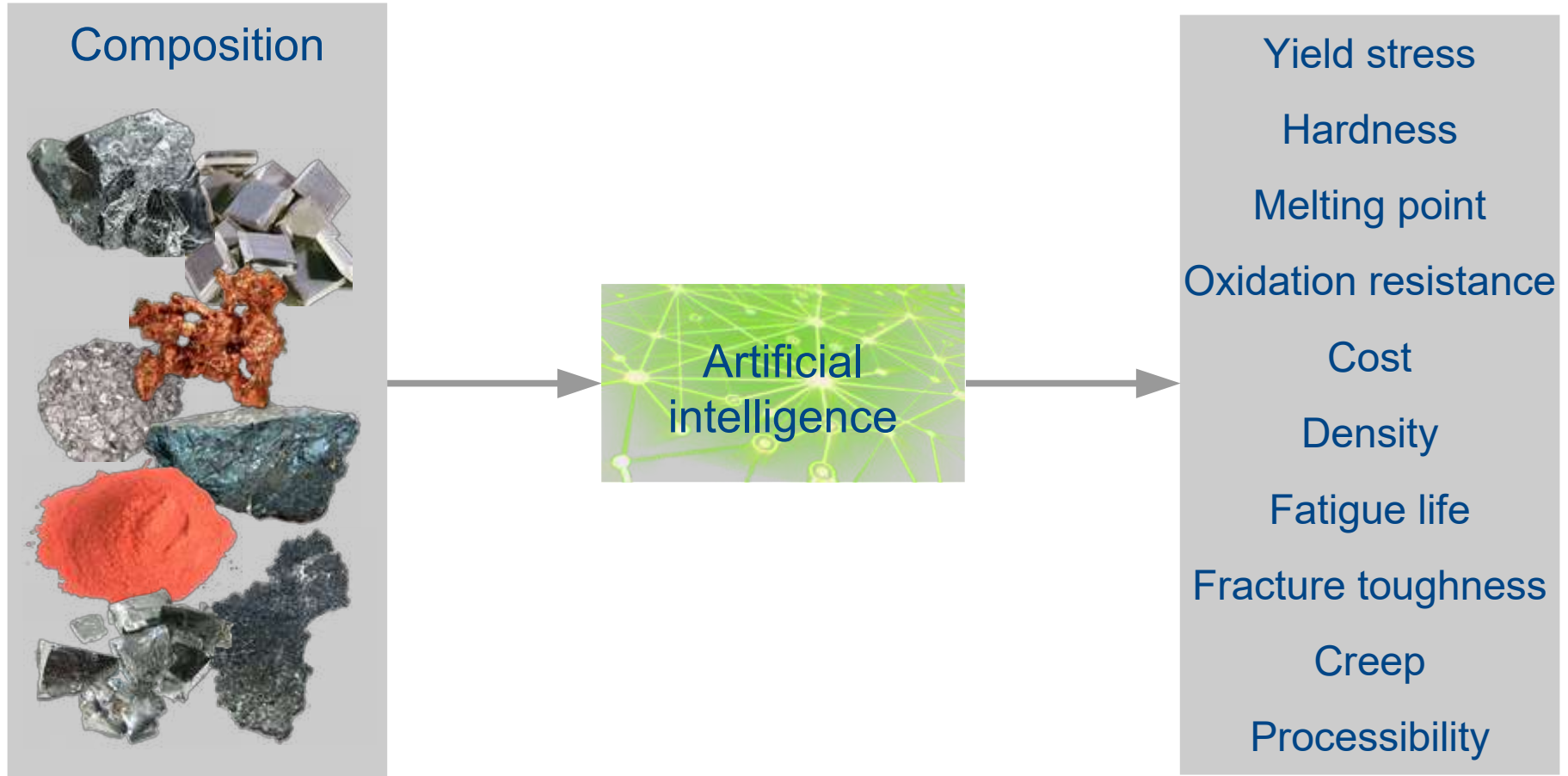
# Merging simulation and experiment



# Merging simulation and experiment

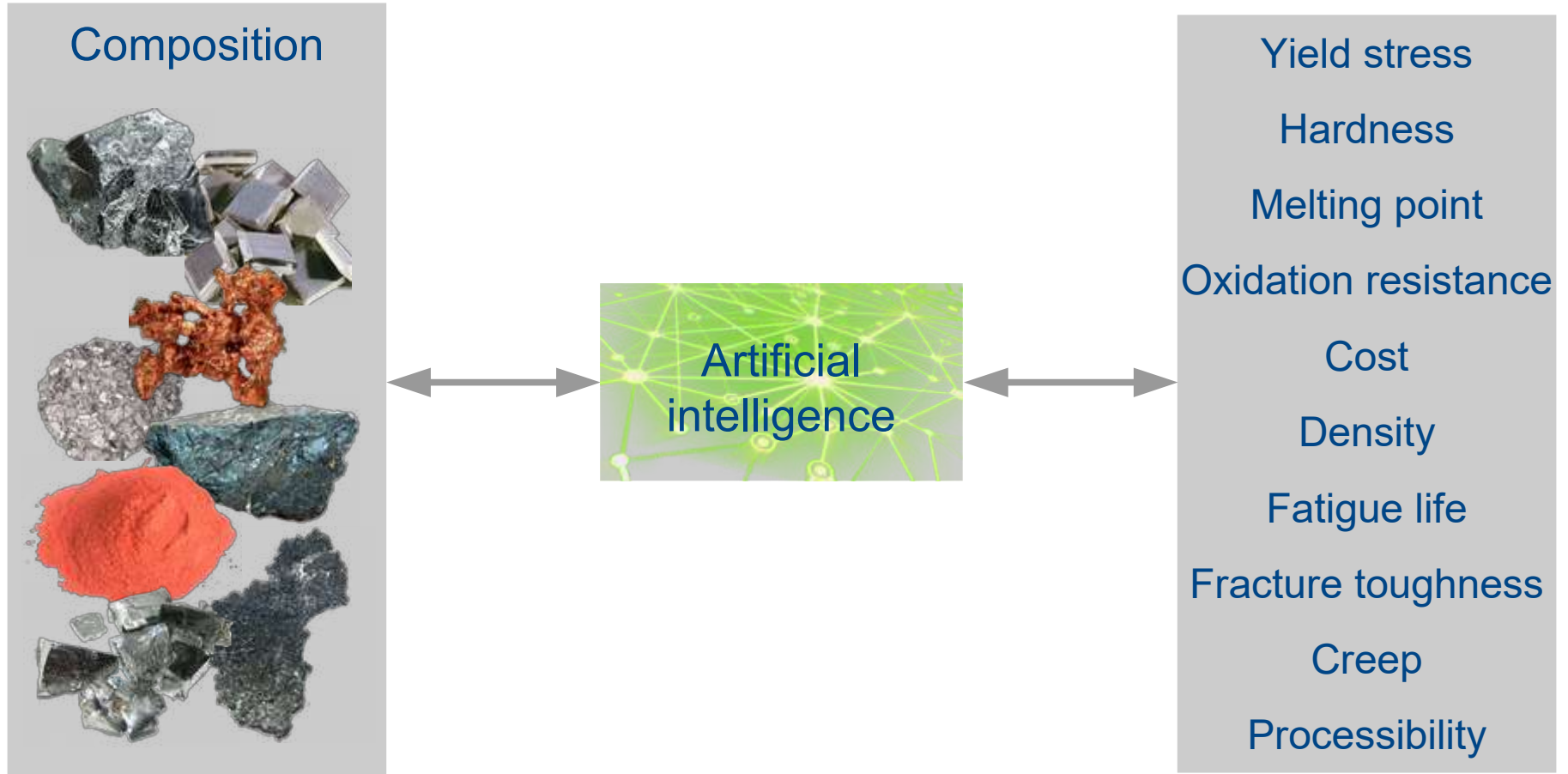


# Artificial intelligence

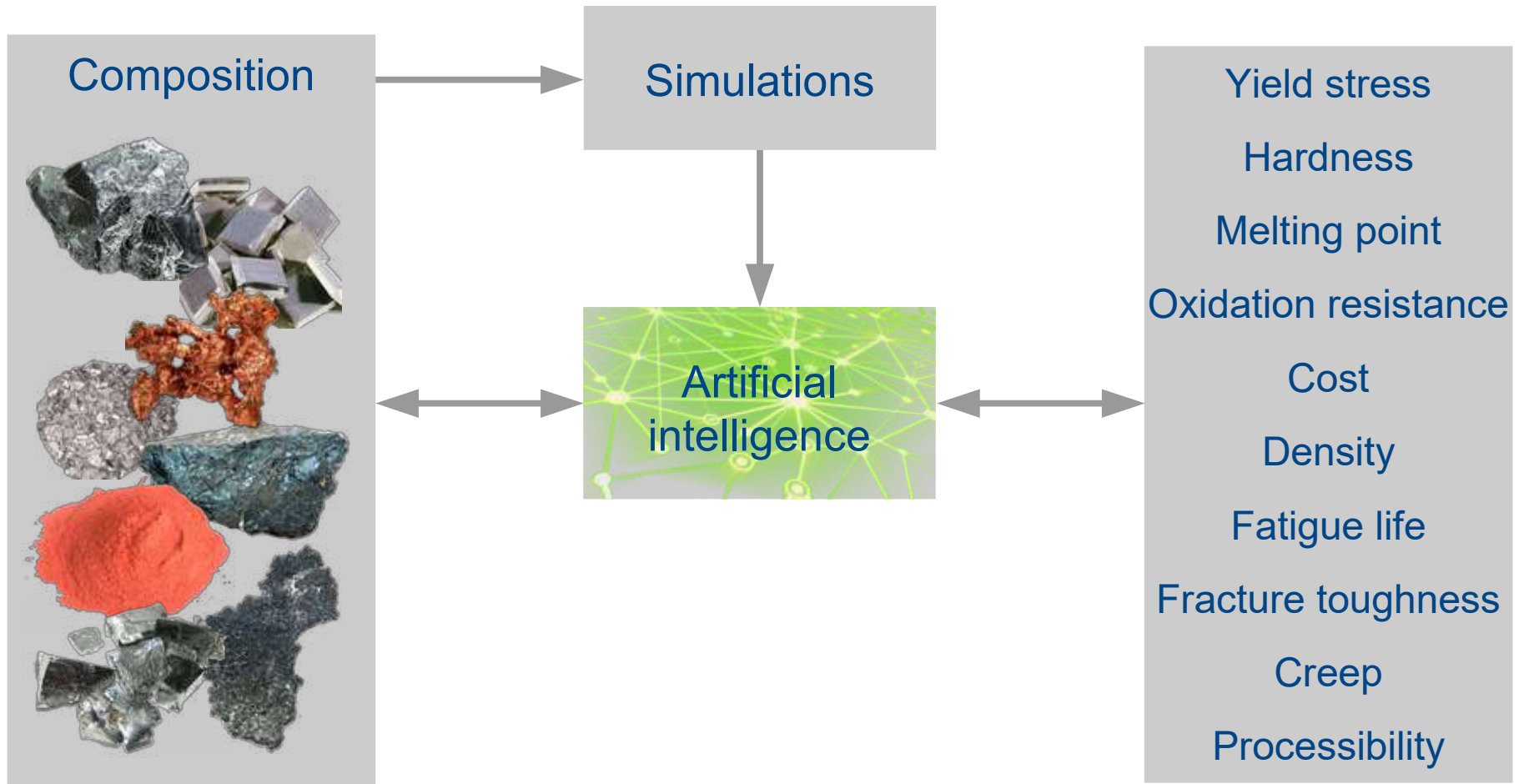




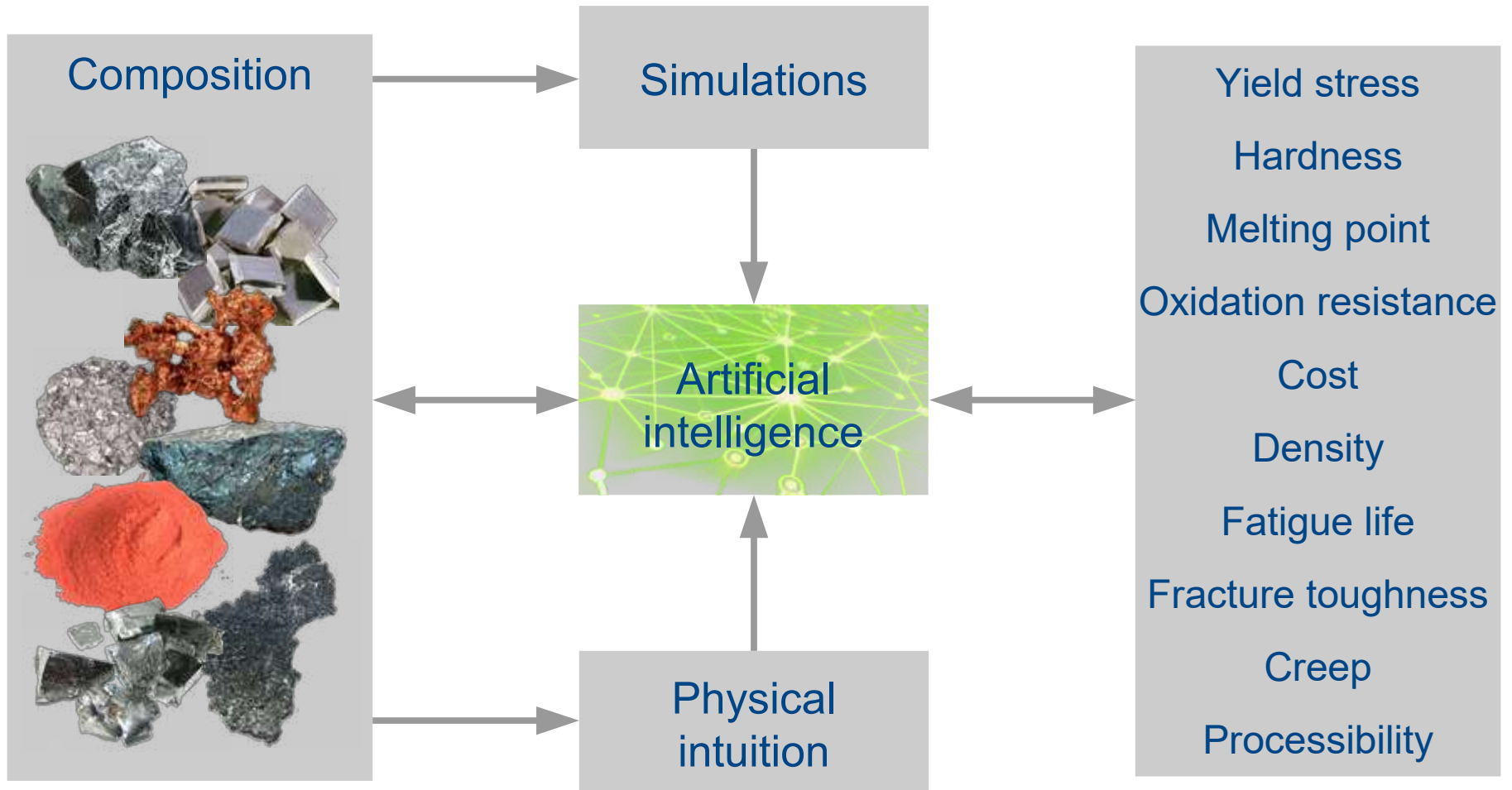
# Artificial intelligence



# Artificial intelligence



# Artificial intelligence



# Exploiting material correlations

Alloy for direct laser deposition

3D printability



Weldability



# Exploiting material correlations

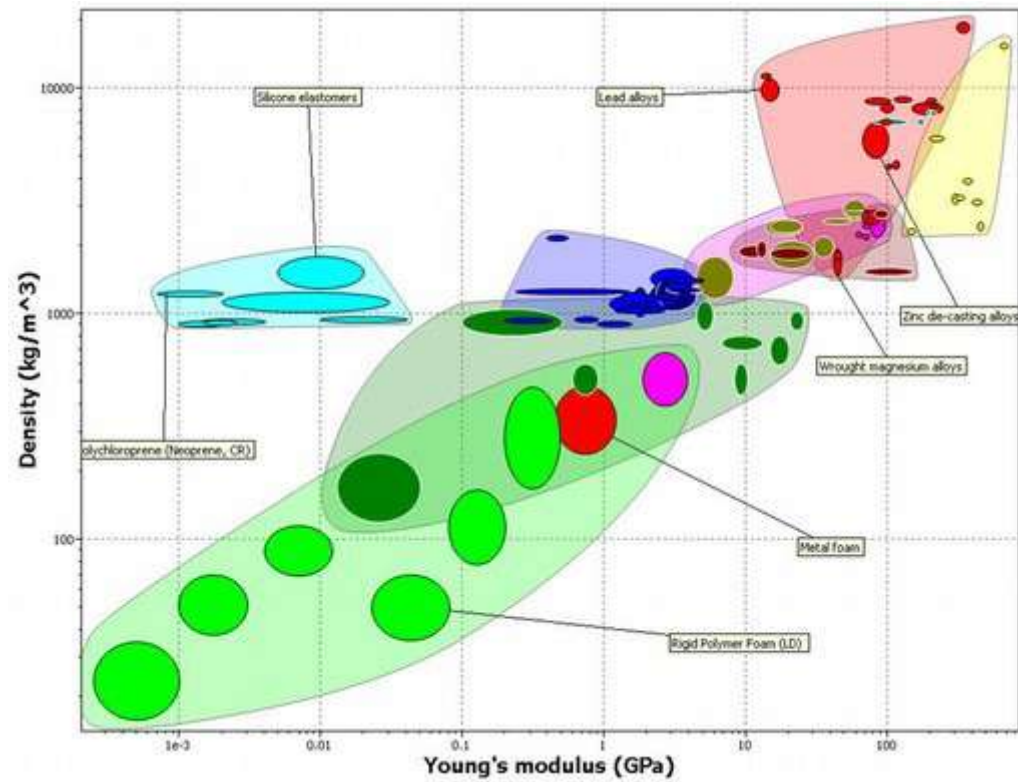
## Alloy for direct laser deposition



## Lithium cathode materials



# Database verification



# Choice of basis set



## **Alloys**

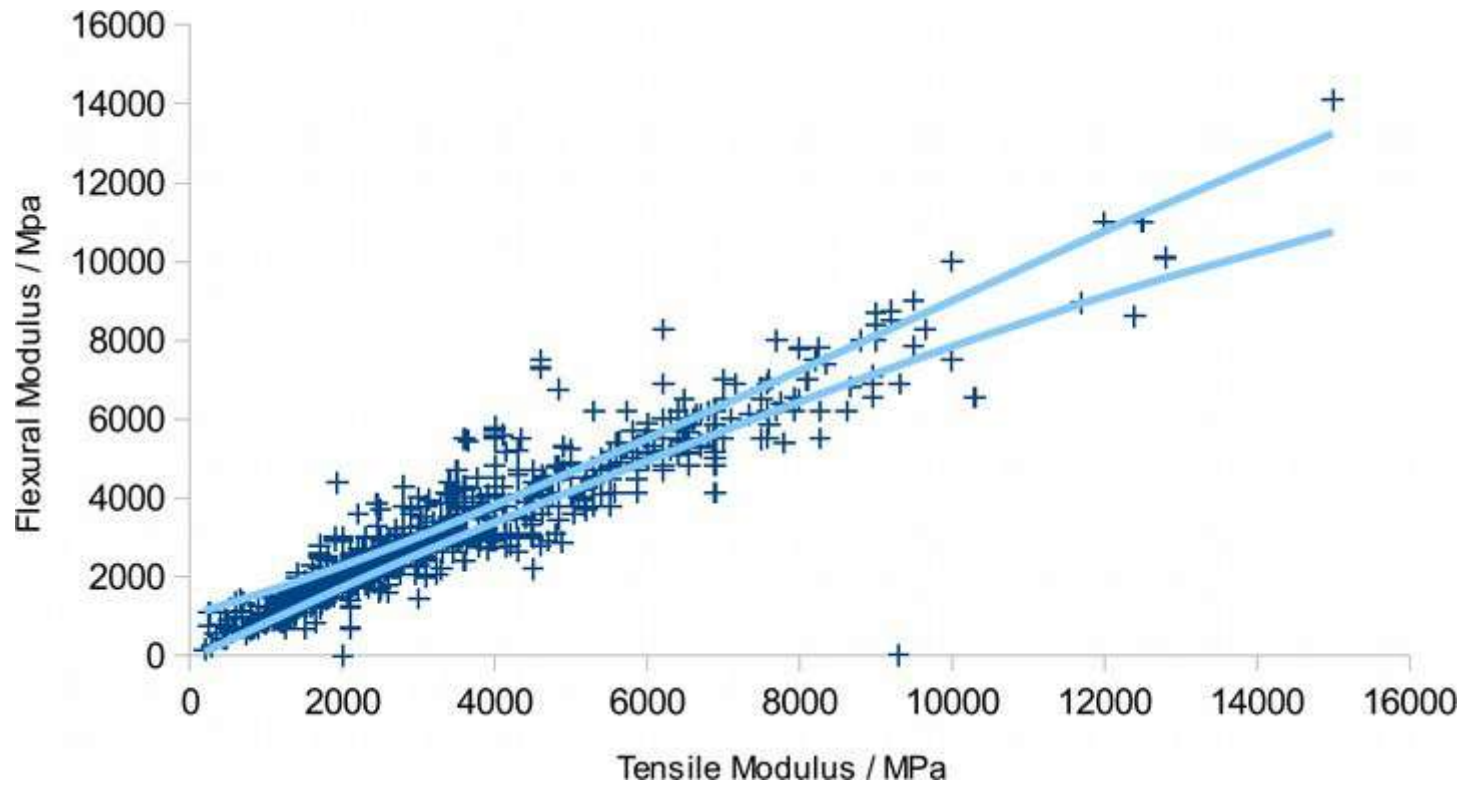
Composition  
Heat treatment



## **Polymers**

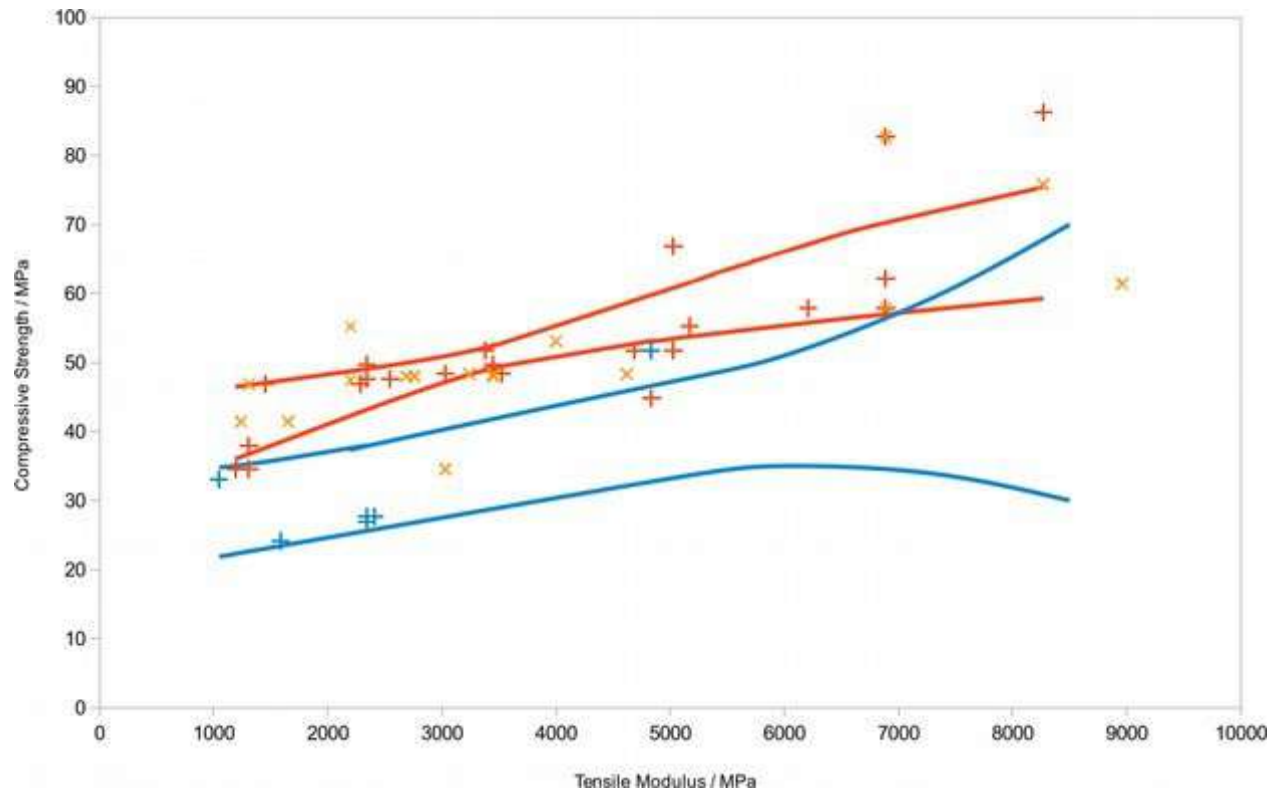
Properties  
Filler type and volume

# Polymers: flexural modulus vs tensile modulus





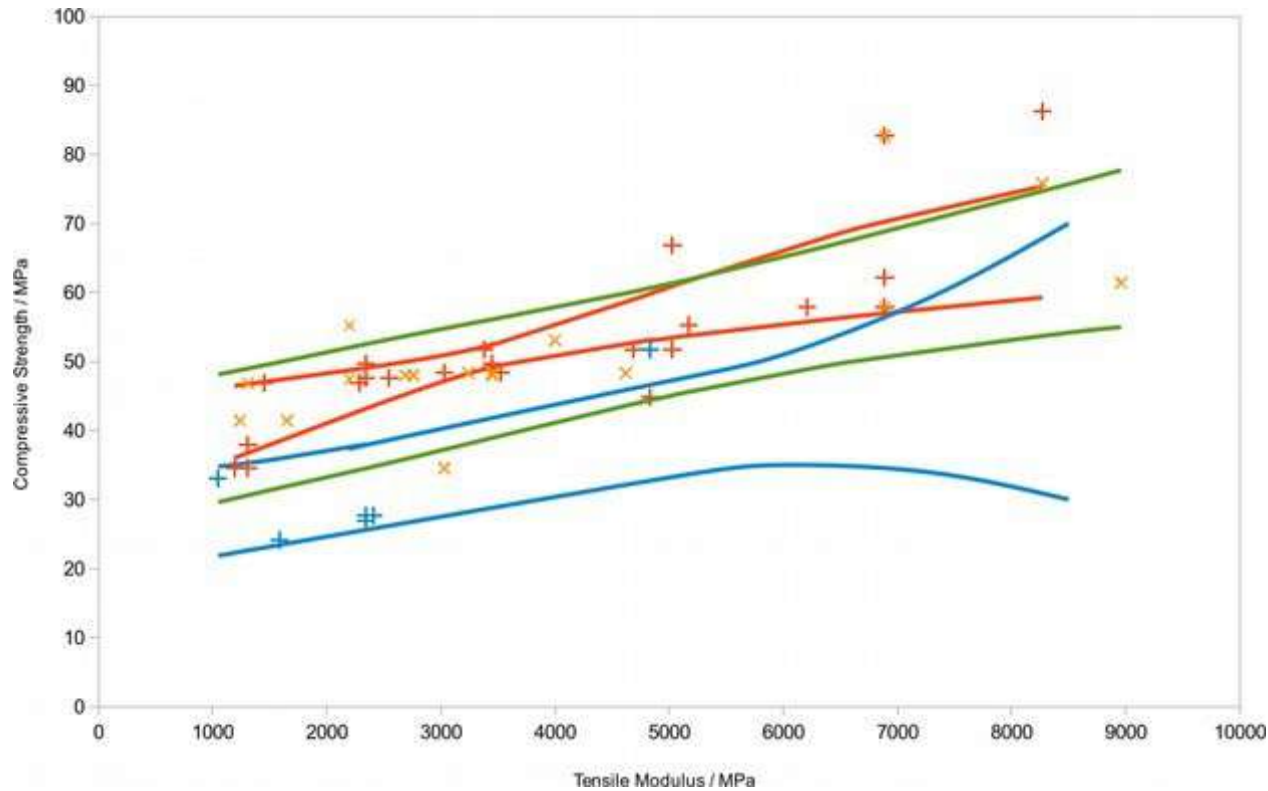
# Polymers: compressive strength vs tensile modulus



Homopolymer

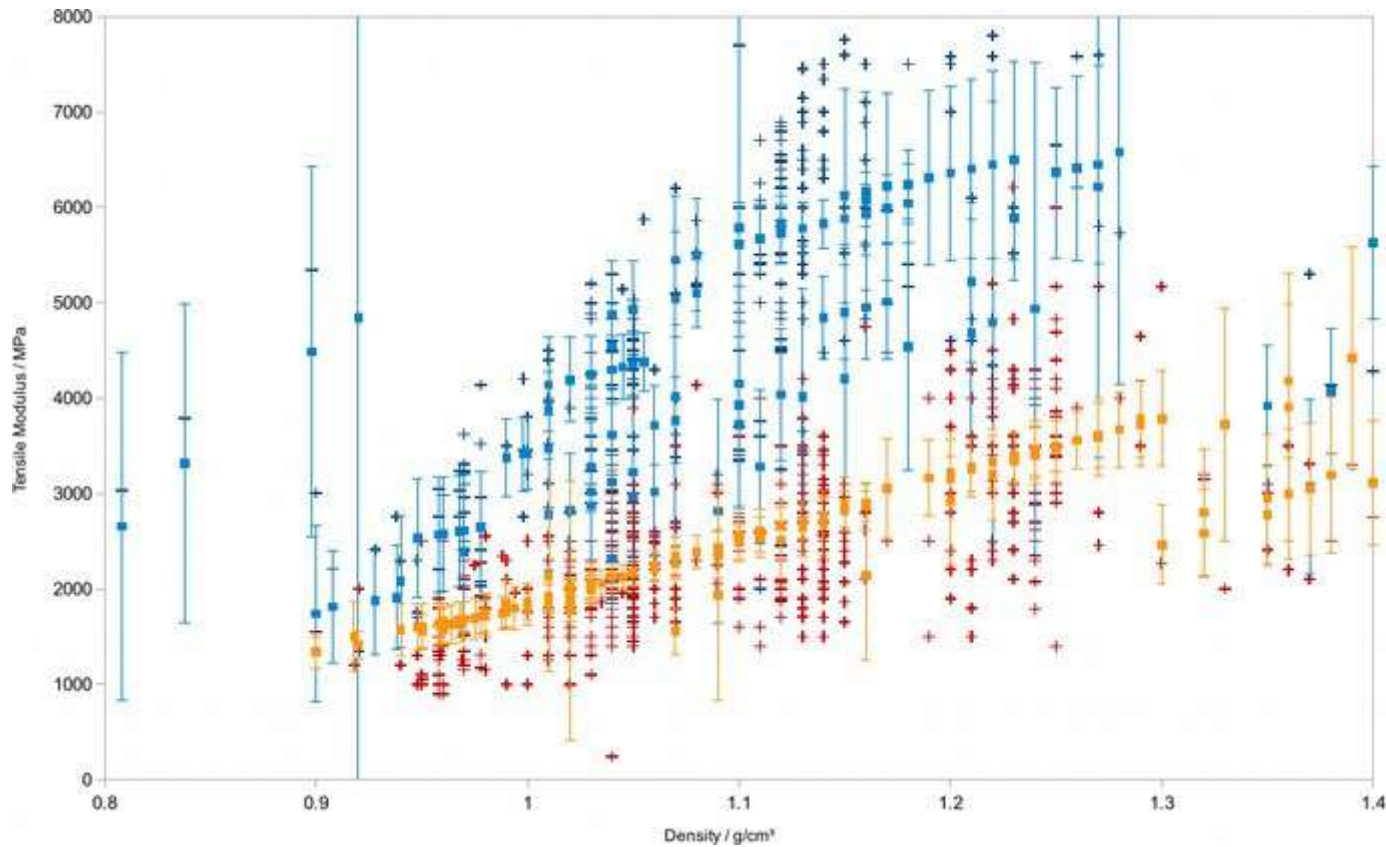
Copolymer

# Polymers: compressive strength vs tensile modulus



Homopolymer  
Unknown  
Copolymer

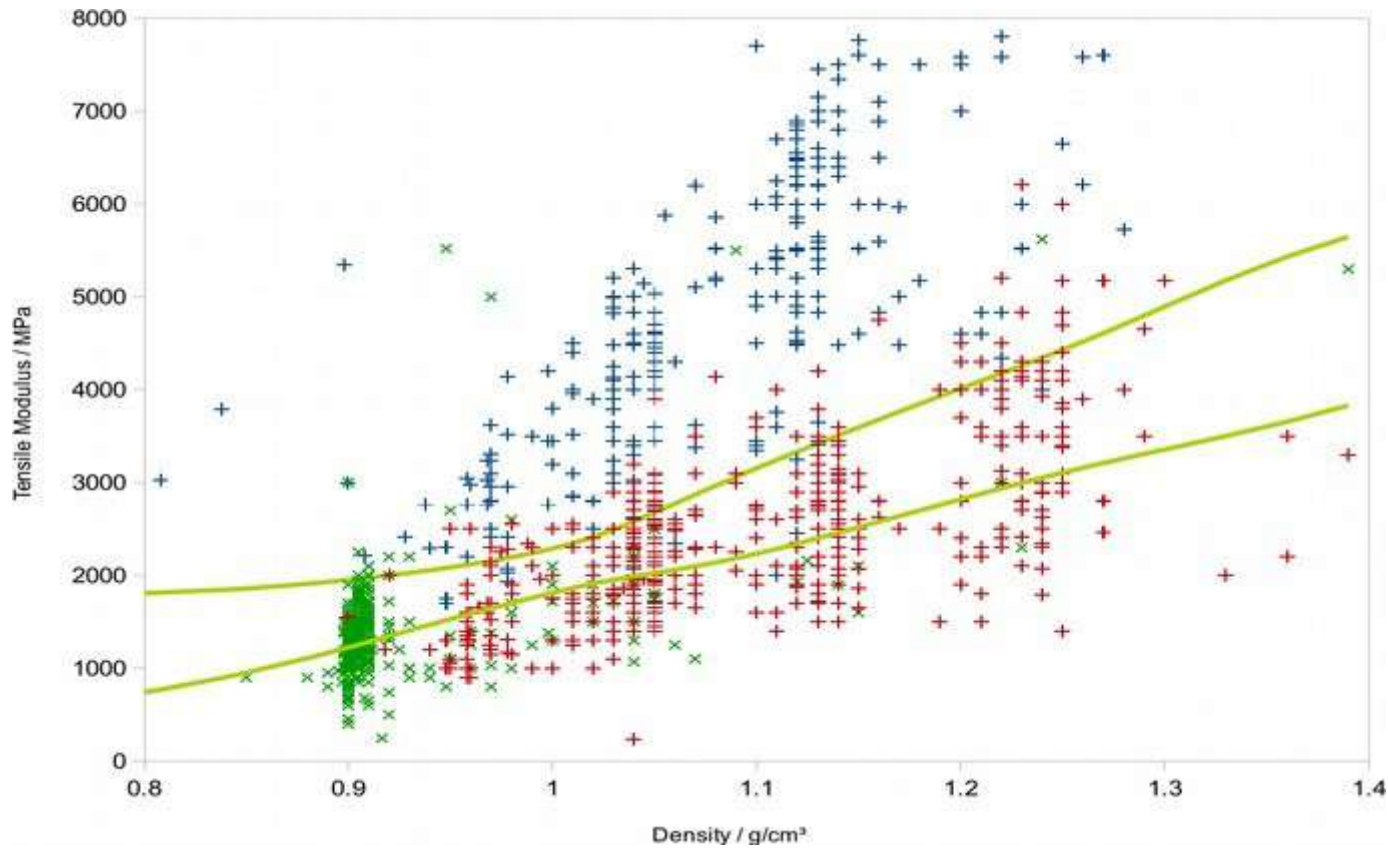
# Polymers: tensile modulus vs density



Glass filler

Mineral filler

# Polymers: tensile modulus vs density



Glass filler

Unknown

Mineral filler

# Summary

Used artificial intelligence to discover materials

Proposed four new alloys, experimentally verified, now real-world testing

Merge simulations and experiments into holistic design tool

Materials database verification and analysis